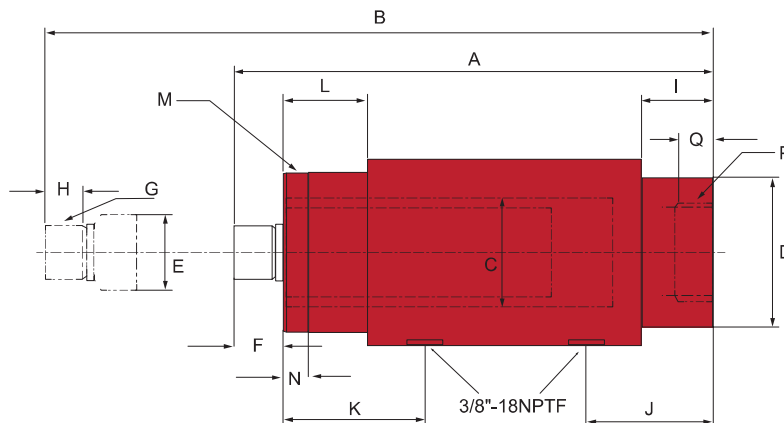


# Precision Double Acting Cylinders


HPD Series - High-Cycle Fixtured Application



HPD Series

\*Note: Precision double acting cylinders do not come with couplers.

- Provides hydraulic power for both extend and retract
- Designed for high cycle production applications
- High strength steel construction from gun drilled solid bar
- Plunger wiper seals keep dirt and contamination out
- Clevis eye attachments are available
- Maximum working pressure: 10,000 psi / 700 bar



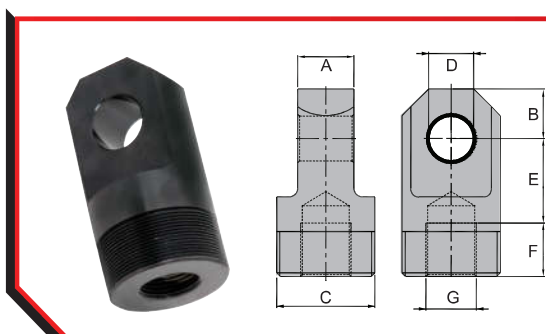
**Related Product: Hoses**

We offer a variety of hoses, fittings, lengths and materials.

pg 67

Cylinder Capacity	Model Number	Push Effective Area (cm <sup>2</sup> )	Pull Effective Area (cm <sup>2</sup> )	Collapsed Height A (mm)	Extended Height B (mm)	Cylinder Bore Dia. C (mm)	Outside Dia. D (mm)
9 Ton 80 kN	HPD0906	11.4	6.5	350	505	38	64
	HPD0910	11.4	6.5	452	709	38	64
16 Ton 142 kN	HPD1606	20.3	10.1	389	548	51	76
	HPD1610	20.3	10.1	490	750	51	76

Model Number	Plunger				Base to Adv. Port J (mm)	Top to Return Port K (mm)	Collar					Weight (kg)
	Dia. E (mm)	Protrusion F (mm)	Thread G (mm)	Thread Length H (mm)			Length L (mm)	Thread M (mm)	Thread Length N (mm)	Int. Base Thread P (mm)	Int. Base Thread Length Q (mm)	
HPD0906	25	25	3/4"-16	19	38	56	38	2"-12	15	1-11/16"-18	35	6.6
HPD0910	25	25	3/4"-16	19	38	56	38	2"-12	15	1-11/16"-18	35	8.4
HPD1606	36	29	1 1/8"-12	25	54	73	54	2 5/8"-16	25	2-3/16"-16	41	10.0
HPD1606	36	29	1 1/8"-12	25	54	73	54	2 5/8"-16	25	2-3/16"-16	41	12.8



## CED Series

By attaching this clevis eye to a HPD cylinder, you gain the ability for pull applications. For use with the 9 or 16 ton HPD cylinders only.

Model Number	Dimensions (mm)						
	A	B	C	D	E	F	G
CED09	25	23	1-11/16"-16N	19	33	24	3/4"-16N
CED16	32	28	2-3/16"-16N	25	48	30	1 1/8"-12N