

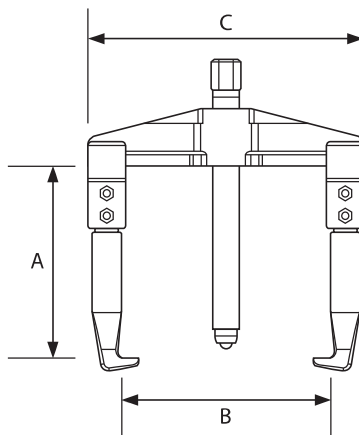


2 Leg Adjustable Puller

Manual Pullers

- Adjustable in width.

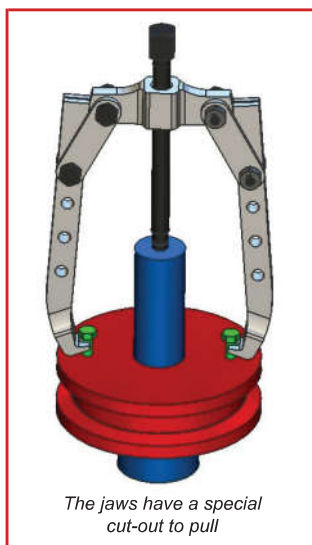
Model Number	Capacity	A (mm)	B (mm)	C (mm)	Weight (kg)
AMP120310	3 Ton	100	95	134	1.1
AMP120315	3 Ton	100	135	176	1.3
AMP120720	7 Ton	150	160	223	3.5
AMP120725	7 Ton	155	190	250	3.6
AMP121230	12 Ton	205	240	325	7.5
AMP121235	12 Ton	200	350	425	9
AMP121240	12 Ton	200	510	585	15
AMP121550	15 Ton	225	640	717	23



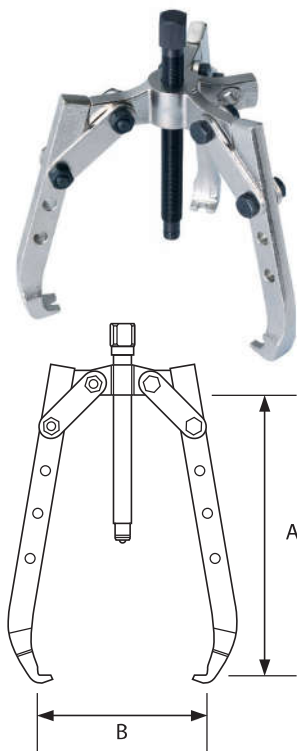
2/3 Leg Puller

Manual Pullers

- Can be used with either 2 or 3 jaws.
- The extra long jaws are adjustable in 4 positions.
- The jaws have a special cut-out to pull.



The jaws have a special cut-out to pull

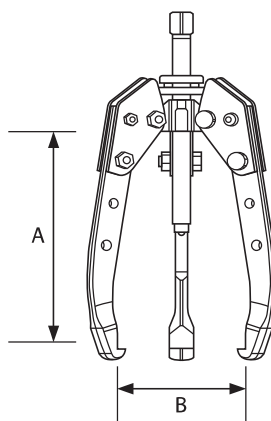


Model Number	Capacity (Ton)	A (mm)	B (mm)	Weight (kg)
AMP230110	1	120	125	0.7
AMP230410	4	210	220	2.1
AMP230710	7	270	280	3.7
AMP230810	8	270	330	4.0

2/3 Leg Puller Self-Centering

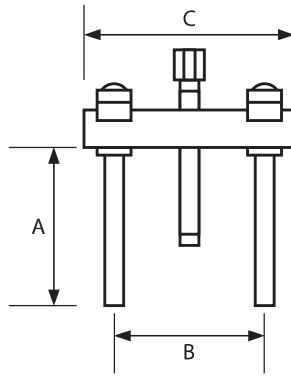
Manual Pullers

Model Number	Capacity (Ton)	A (mm)	B (mm)	Weight (kg)
AMPC230110	1	120	125	0.8
AMPC230410	4	210	220	2.1
AMPC230710	7	270	280	6.7



Push Puller

Manual Pullers

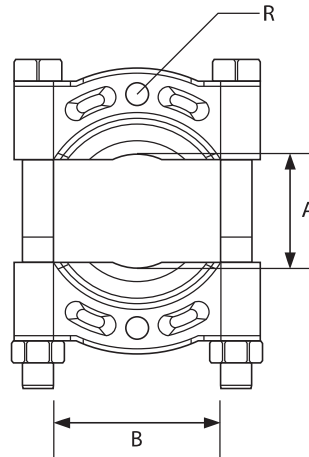


Model Number	A (mm)	B Max. (mm)	B Min. (mm)	C (mm)	Weight (kg)
AMP221102	120	110	46	122	1
AMP221103	120	140	46	156	1.1
AMP221110	190	195	62	210	3.4

Splitters

Manual Pullers

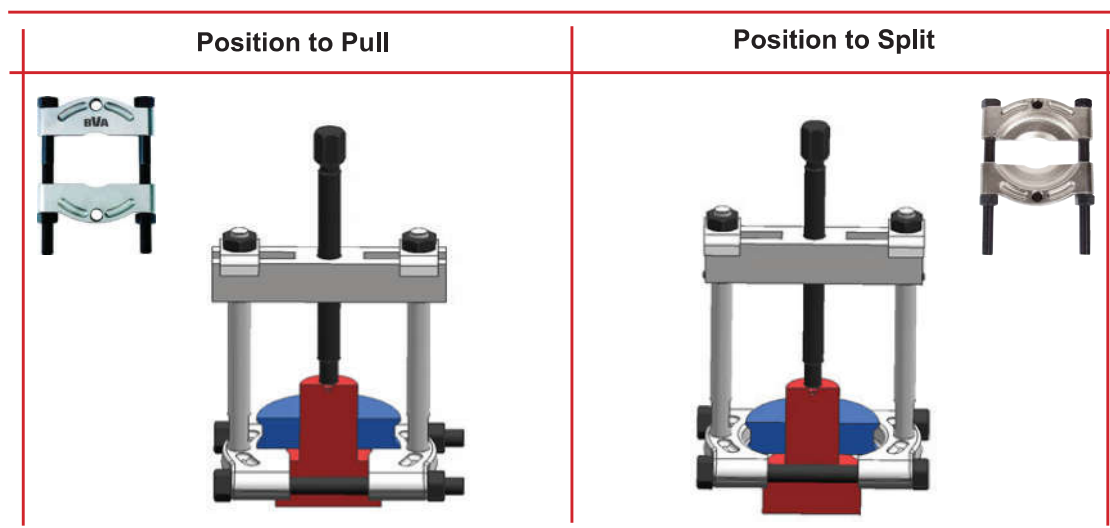
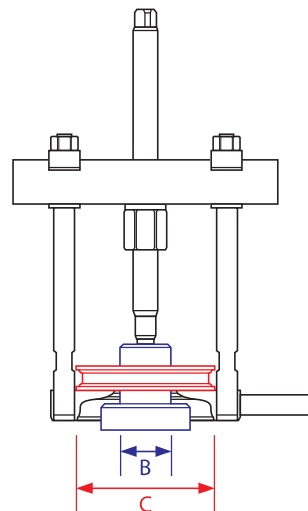
Model Number	A Max. (mm)	A Min. (mm)	B (mm)	R (mm)	Weight (kg)
APS1202	60	4	60	3/8"	0.7
APS1203	80	6	80	3/8"	1.3
APS1204	110	10	110	5/8"	2.7



Splitters Set

Manual Pullers

Model Number	A (mm)	B (mm)	C (mm)
AMP320202	100	55	90
AMP320303	100	80	130
AMP321004	152	108	175



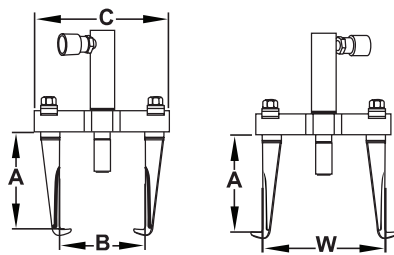
Note: Be sure to use the correct position for the required action in order to avoid damaging the Splitter-Set.



Puller 2 Leg

Hydraulic Pullers (Excluding Cylinder)

- Pullers for Single Acting Cylinders.

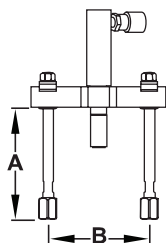


AP(L) 1205

Model Number	Cylinder (Optional)	Capacity (Ton)	A (mm)	B Min. (mm)	B Max. (mm)	W (mm)	W (mm)	C (mm)	Weight (kg)
AP1205	H0503	5	160	60	200	175	270	260	8.5
APL1205	H0503	5	220	60	200	175	270	260	9.0



AP2205



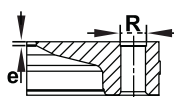
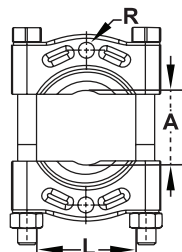
Model Number	Cylinder (Optional)	Capacity (Ton)	A (mm)	B Min. (mm)	B Max. (mm)	Weight (kg)
AP2205	H0503	5	190	82	250	7.8

Splitters

Model Number	A Min. (mm)	A Max. (mm)	L (mm)	R (mm)	e (mm)	Weight (kg)
APS1204	10	110	110	5/8"	2.5	2.8
APS1206	12	134	155	5/8"	2.0	5.7



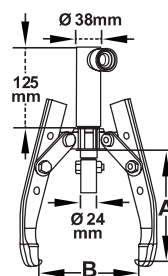
APS1204



AP2205 + APS1204

Puller 2/3 Leg

Model Number	Cylinder (Optional)	Capacity (Ton)	A (mm)	B Max. (mm)	Weight (kg)
AP1305	H0503	5	225	240	7.8



AP1305

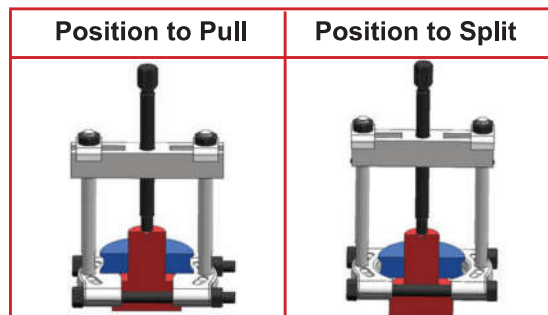
Puller Kit

(Excluding Cylinder)

Content:

- 2/3 Leg Puller
- 2 Leg Puller
- Extensions for 2 Leg Puller
- Splitter

Puller Kit	Capacity (Ton)					Weight (kg)
		2/3 Leg Puller	2 Leg Puller	Extension Set	Splitter	
APK1005	5	AP1305	APL1205	APE1108+APE1118	APS1204	18



◀ Note: Be sure to use the correct position for the required action in order to avoid damaging the Splitter-Set.

Hydraulic Set- Hollow Cylinder

Content:

- Handpump P350
- Cylinder H0503
- Gauge and Gauge
- Adaptor
- Hose
- Fitting and Coupler

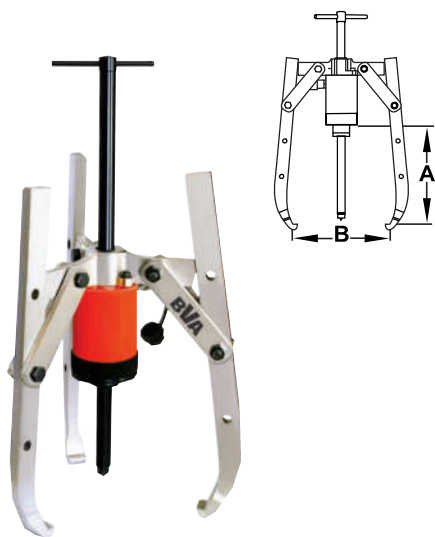


Hydraulic Set	Capacity (Ton)							Weight (kg)
		Handpump	Fitting	Gauge + Adaptor	Hose	Coupler	Cylinder	
APH0503	5	P350	CA3814	GBW1460 + CF3814	CS3814-2	CH38-M	H0503	8



Puller 2/3 and 3 Leg

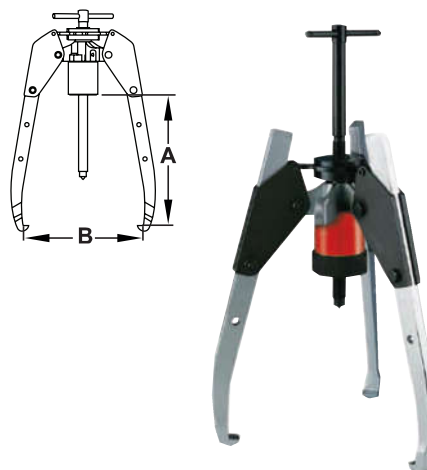
(Excluding Cylinder)



Model Number	Cylinder (Optional)	Capacity (Ton)	Legs	A (mm)	B Max. (mm)	Weight (kg)
AP2310	HC1202	10	2/3	320	360	9
AP2320	HC2002T	20	3	320	480	23
AP2330	HC3002T	30	3	410	650	40
AP2360	HC6003T	60	3	750	980	87
APL2310	HC1202	10	2/3	400	410	9
APL2320	HC2002T	20	3	435	540	23
APL2330	HC3002T	30	3	525	720	40
APL2360	HC6003T	60	3	850	1080	87

Self-Centering Puller 2/3 and 3 Leg

Model Number	Cylinder (Optional)	Capacity (Ton)	Legs	A (mm)	B Max. (mm)	Weight (kg)
APC2310	HC1202	10	2/3	320	350	15
APC2320	HC2002T	20	3	320	480	33
APC2330	HC3002T	30	3	410	650	57
APC2360	HC6003T	60	3	750	980	122
APC2399	HC10003T	100	3	1050	1600	322
APLC2310	HC1202	10	2/3	400	410	16
APLC2320	HC2002T	20	3	435	540	36
APLC2330	HC3002T	30	3	525	720	63
APLC2360	HC6003T	60	3	850	1080	131



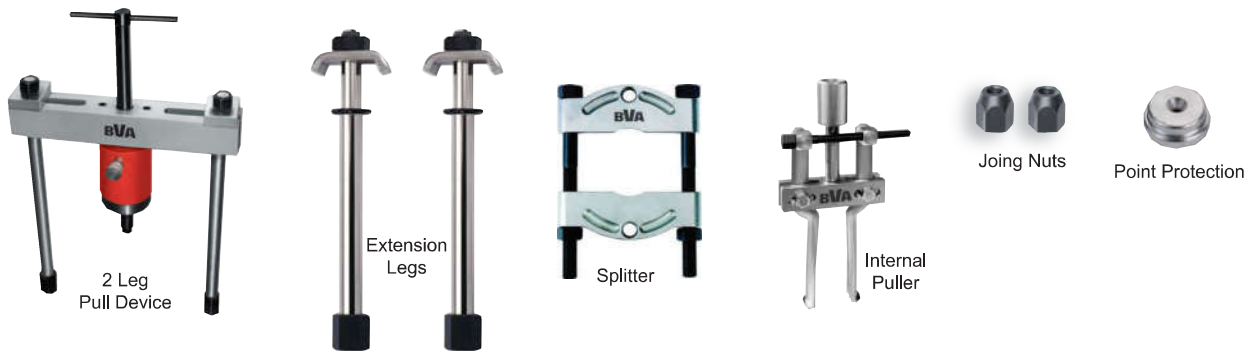
Application	
Splitter	Internal Puller

Puller Kit (Excluding Cylinder)

Puller Kit	Incl. 3-Leg Puller	Incl. Self-Centering 3-Leg Puller	Capacity (ton)
APK1010	APK1110	APK1210	10
APK1020	APK1120	APK1220	20
APK1030	APK1130	APK1230	30
APK1060	APK1160	APK1260	60
APK1099	-	APK1299	100

Content:

- 2 Leg Puller
- Extension Legs
- Splitter
- Internal Puller
- Joining Nuts
- Point Protection
- 2/3 Leg Puller (optional)



Hydraulic Set- Hollow Cylinder

Content:

- Handpump
- Hollow Cylinder
- Gauge and Gauge
- Adaptor
- Hose
- Fitting and Coupler

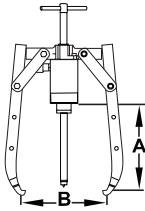


Hydraulic Set	Capacity (Ton)								Weight (kg)
		Handpump	Fitting	Gauge + Adaptor	Hose	Coupler	Cylinder	Saddle	
APHC1202	10	P350	Incl.	GBW1460 + CF3814	CS3814-2	CRZ14-M	HC1202	-	10
APHC2002	20	P350	Incl.	GBW1460 + CF3814	CS3814-2	CH38-M	HC2002T	APS20	15
APHC3002	30	P350	Incl.	GBW1460 + CF3814	CS3814-2	CH38-M	HC3002T	APS30	18
APHC6003	60	P1000	-	GBW1460 + CF3814	CS3814-2	CH38-M	HC6003T	APS60	46
APHC1003	100	P2301	-	GBW1460 + CF3814	CS3814-2	CH38-M	HC10003T	APS100	73



Composition Hydraulic Puller Kits

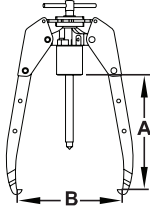
Model Number	Capacity (Ton)									Weight (kg)
		3 or 2/3 Leg Puller Self-Centering	3 or 2/3 Leg Puller	2 Leg Puller	2x Extender Set	Splitter	Internal Puller	Joining Nuts	Point Protection	
APK1010	10			AP2210	APE1120 + APE1146	APS1204	API1210	AJN05	APP10	35
APK1020	20			AP2220	APE1220 + APE1252	APS1206	API1220	AJN10	APP20	60
APK1030	30			AP2230	APE1333 + APE1358	APS1210	API1230	AJN30	APP30	120
APK1060	60			AP2250	APE1550 + APE1582	APS1210D	API1250	AJN50	APP30	215
APK1061	60			AP2250	APE1550 + APE1582	APS1212	API1250	AJN50	APP30	230
APK1110	10		AP2310 (2/3 Leg)	AP2210	APE1120 + APE1146	APS1204	API1210	AJN05	APP10	44
APK1120	20		AP2320 (3 Leg)	AP2220	APE1220 + 1252	APS1206	API1220	AJN10	APP20	83
APK1130	30		AP2330 (3 Leg)	AP2230	APE1333 + APE1358	APS1210	API1230	AJN30	APP30	160
APK1160	60		AP2360 (3 Leg)	AP2250	APE1550 + APE1582	APS1210D	API1250	AJN50	APP30	302
APK1161	60		AP2360 (3 Leg)	AP2250	APE1550 + APE1582	APS1212	API1250	AJN50	APP30	317
APK1210	10	APC2310 (2/3 Leg)		AP2210	APE1120 + APE1146	APS1204	API1210	AJN05	APP10	50
APK1220	20	APC2320 (3 Leg)		AP2220	APE1220 + 1252	APS1206	API1220	AJN10	APP20	93
APK1230	30	APC2330 (3 Leg)		AP2230	APE1333 + APE1358	APS1210	API1230	AJN30	APP30	177
APK1260	60	APC2360 (3 Leg)		AP2250	APE1550 + APE1582	APS1210D	API1250	AJN50	APP30	349
APK1261	60	APC2360 (3 Leg)		AP2250	APE1550 + APE1582	APS1212	API1250	AJN50	APP30	364



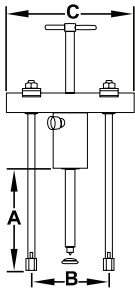
Model Number	Capacity (Ton)	A (mm)	B Min. (mm)	B Max. (mm)	Weight (kg)
AP2305	10	296	50	350	9
AP2320	20	230	70	480	23
AP2330	30	407	90	580	40
AP2360	60	750	120	1080	87

3 Leg Pullers

3 Leg Self-Centering Pullers

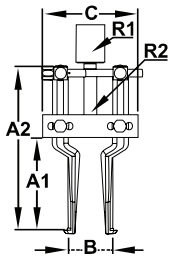


Model Number	Capacity (Ton)	A (mm)	B Min. (mm)	B Max. (mm)	Weight (kg)
APC2305	10	296	50	350	15
APC2320	20	230	70	480	33
APC2330	30	407	90	580	57
APC2360	60	750	120	1080	134



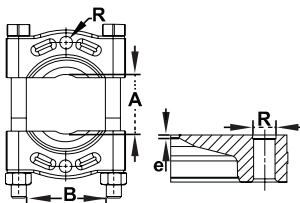
Model Number	Capacity (Ton)	A (mm)	B Min. (mm)	B Max. (mm)	C (mm)	Weight (kg)
AP2210	10	300	115	260	280	18.5
AP2220	20	265	140	345	370	34.7
AP2230	30	284	180	440	480	56
AP2250	60	447	220	580	615	113.5

2 Leg Pullers



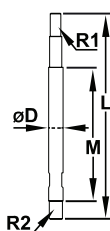
Model Number	A1 (mm)	A2 (mm)	B Min. (mm)	B Max. (mm)	C	R1	R2	Weight (kg)
API1210	115	237	40	145	133	3/4"UNF 16h	5/8" 14h	2.0
API1220	115	237	40	145	133	1"UNF 8h	5/8" 14h	2.4
API1230	150	310	60	240	202	1 1/4"UNF 7 h	1" 14h	6.0
API1250	150	310	60	240	202	1 5/8"UNS 5.5h	1" 14h	6.4

Internal Pullers



Model Number	A Min. (mm)	A Max. (mm)	L (mm)	R	e (mm)	Weight (kg)
APS1204	10	110	110	5/8"	2.5	2.8
APS1206	12	134	155	5/8"	2	5.7
APS1210	17	250	260	1"	4	28.5
APS1210D	17	250	260	1 1/4"	4	28.5
APS1212	35	300	300	1 1/4"	4.5	43.5

Splitters



Model Number	L (mm)	M (mm)	Ø D (mm)	R1	R2
APE1120	180	100	16	5/8" - 18h	1/2" - 20h
APE1220	209	89	25	5/8" - 18h	3/4" - 16h
APE1333	328	158	32	1" - 14h	1" - 14h
APE1550	504	292	42	1 1/4" - 12h	1 1/4" - 12h
APE1146	230	150	16	5/8" - 18h	1/2" - 20h
APE1252	515	395	25	5/8" - 18h	3/4" - 16h
APE1358	582	412	32	1" - 14h	1" - 14h
APE1582	820	608	42	1 1/4" - 12h	1 1/4" - 12h

Leg Extensions



Hydraulic Gear Pullers

POSILOCK® (Excluding Cylinder)



- Safety cage design prevents jaws from slipping
- Cylinders are removable for easy servicing
- Each puller includes a lift plate and a ram point set

Capacity	Model Number	Reach (mm)	Spread Range (mm)	Ram Stroke (mm)	Jaw Style
5 Tons 44 kN	HGP053	152	13- 203	127	External
10 Tons 89 kN	HGP103	203	19 - 305	156	External
15 Tons 133 kN	HGP153	254	25 - 381	254	External
25 Tons 222 kN	HGP253	305	64 - 457	356	External
25 Tons 222 kN	HGP253IE	305	64 - 457	356	External/Internal
50 Tons 445 kN	HGP503	356	76 - 635	337	External

Our Recommendation

This combination kit will work well with the hydraulic gear pullers. See our combo section for more details.



Hydraulic Bench Vise

5 Ton Holding Force (Excluding Pump & Accessories)

- Hands free operation with foot pump control
- Air control valve for variable speed and added safety
- Cast steel construction 52,000 PSI tensile strength
- Hydraulic pressure closes jaws, spring return opens jaws



Safety Instructions

Visit our DO'S and DON'TS section to review the best methods of operation. Always be prepared.

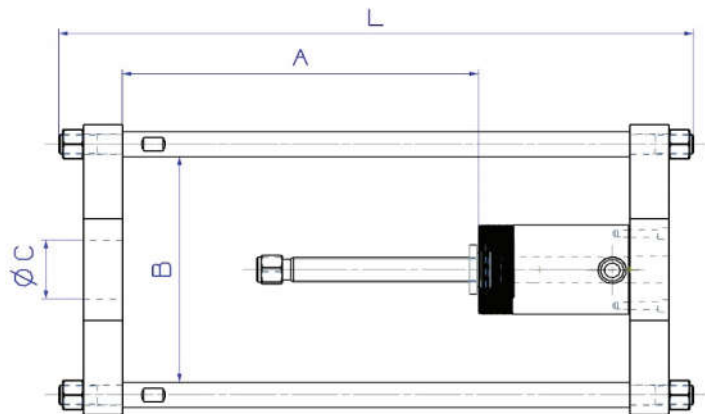
pg 102

Model Number	Capacity	Jaw Width (mm)	Jaw Clearance (mm)	Jaw Opening (mm)
HBV5	5 Tons 44 kN	203	89	203

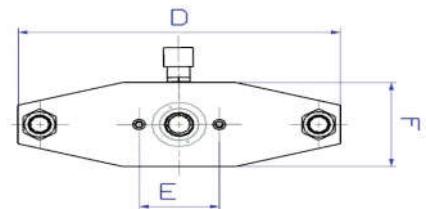
Bolt Puller/King Pin Press

30 Ton & 60 Ton (Excluding Cylinder)

Bolt Puller/King Pin Press (excluding hydraulics).
Ideal for pushing King Pin and Stub Axle Pin replacement.
Mobile and easy to use in the field or workshop.



Model Number	A (mm)	B (mm)	Ø C (mm)	D (mm)	E (mm)	F (mm)	L (mm)	Weight (kg)
AP2239	420	288	75	370	92.1	118	750	36
AP2269	475	398	98	520	130.2	170	900	97



Hydraulic Set is not included
We recommend the following set:

Capacity (Ton)	Handpump	Gauge + Adaptor	Hose	Coupler	Cylinder	Saddle	Weight (kg)
30	PA1500	GBW1460 + CF3814	C3814-2	CH38-M	HC3002T	APS30	18
60	PA1500	GBW1460 + CF3814	C3814-2	CH38-M	HC6003T	APS60	46